

The Synergy Setting Tools are machined using quality materials and all machining follows strict guidelines set by our ISO 9001 certification standards.

Each and every part is inspected 100% and is checked using specially ground gauges to ensure perfect assembly every time, no matter where.

All material certs, inspection data and Certificates of Conformance are kept on file for 5 years. Every piece of material that is supplied by Synergy Industries has 100% traceability and it can be tracked from the field all the way back to the mill that supplied it.

Synergy Industries is proud to introduce our new quality line-up of Wireline products. Setting Tools available: The SI-10, SI 20 and the SI Compact.

DIMENSIONS AND RATINGS

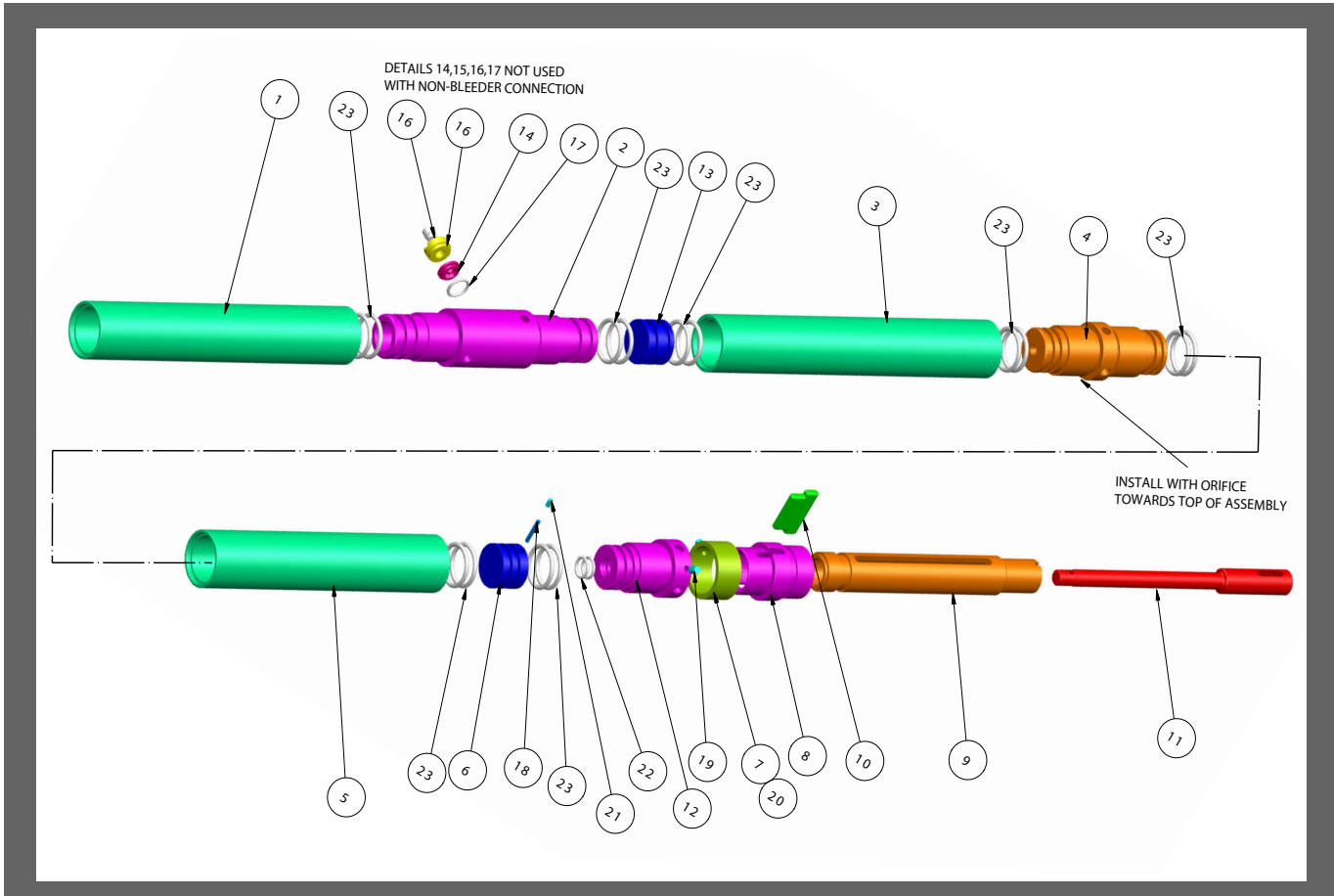
Max Temp:	400°	Max Press:	15,000 lbs.
Max OD:	2.75 in.	Min Csg/Tbg ID:	3.125 in.
Length:	74.5 in.	Max Csg/Tbg ID:	N/A
		Length with firing head:	72.21 in.
		Weight w/o firing head:	63 lbs.
		Maximum Setting Force:	35,000 lbs.

BOREHOLE CONDITIONS

Borehole Fluids:	<input checked="" type="checkbox"/> Salt <input checked="" type="checkbox"/> Fresh <input checked="" type="checkbox"/> Oil <input checked="" type="checkbox"/> Air
Recommended Max. Loggin Speed:	30ft/mn
Tool Positioning:	<input type="checkbox"/> Centralized <input type="checkbox"/> Eccentralized
Max. speed in well w/ plug/retainer attached:	200ft/mn

MANUFACTURERS STATEMENT

- Machined under strict ISO 9001 standards
- Custom ground thread and Go/No Go Gauges
- 100% inspection required
- All material certification, inspection data, and Conformance Certifications are kept on file for 5 years



PART NUMBER	NO	QTY	ITEM	REV	FINISHED SIZE	MATERIAL	HT	LVL
SIST275-001	1	1	Power Chamber	5	2.750 DIA. X 15.50	4140 110 KSI MYS	RC30-36	10
SIST275-002	2	1	Manual Bleeder Valve Connection	5	2.750 DIA. X 12.08	4140 110 KSI MYS	RC30-36	11
SIST275-003	3	1	Upper Cylinder	5	2.750 DIA. X 16.585	4140 110 KSI MYS	RC30-36	12
SIST275-004	4	1	Cylinder Connector	5	2.750 DIA. X 7.26	4140 110 KSI MYS	RC30-36	13
SIST275-005	5	1	Lower Cylinder	5	2.750 DIA. X 13.88	4140 110 KSI MYS	RC30-36	14
SIST275-006	6	1	Lower Piston	5	2.1235 DIA. X 1.505	4140 110 KSI MYS	RC30-36	15
SIST275-007	7	1	Cross Link Retaining Ring	5	2.750 DIA. X 1.375	4140 80KSI MYS	RC22	16
SIST275-008	8	1	Cross Link Sleeve	5	2.750 DIA. X 3.895	4140 110 KSI MYS	RC30-36	17
SIST275-009	9	1	Setting Mandrel	5	1.860 DIA. X 12.90	4140 110 KSI MYS	RC30-36	18
SIST275-010	10	1	Cross Link	5	.368 X 2.732 X 1.50	4340 Q&T 150KSI MYS	RC37-43	19
SIST275-011	11	1	Piston Rod	5	1.213 DIA. X 13.687	4140 140KSI MYS	RC36-42	20
SIST275-012	12	1	Cylinder Head	5	2.750 DIA. X 4.180	4140 110 KSI MYS	RC30-36	21
SIST275-013	13	1	Flowing Piston	5	2.1235 DIA. X 1.505	4140 80KSI MYS	RC22	22
SIST275-014	14	1	Bleeder Disk		1.150 DIA. X .265	1018		23
SIST275-015	15	1	Disk Retainer	5	1.250 DIA. X .625	416 Q&T 100KSI MYS	RC28-32	24
SIST275-016	16	1	Plastic Plug-Retainer		.560 DIA. X .617	POLYETHELENE		25
SIST275-017	17	1	SAFETY O-RING-Bleeder		.915 ID X .139	PARKER: 2-213/NI490		26
SIST275-018	18	1	Retainer Pin		3/16 OD X 1-3/8	BRASS		27
SIST275-019	19	1	SET SCREW-Cylinder Head		3/8-16UNC X 1/2	GRADE 8+	RC28	28
SIST275-020	20	1	SET SCREW-Cross Link		3/8-16UNC X 3/8	GRADE 8+	RC28	29
SIST275-021	21	1	SET SCREW-Retaining Pin		1/4-20UNC X 3/8	GRADE 8+	RC28	30
SIST275-022	22	2	O-RING-Cylinder Head Inner		.812 ID X .139	PARKER: 2-211.NI1490		31
SIST275-023	23	14	O-RING-External		1.750 ID X .213	PARKER: 2-327/NI490		32
SIST275-024	24	1	Non Bleeder Connection	0	2.750 DIA. X 12.08	4140 110 KSI MYS	RC30-36	11